

SPARKS Magazine – Autumn Issue 2020 - Answer Sheet

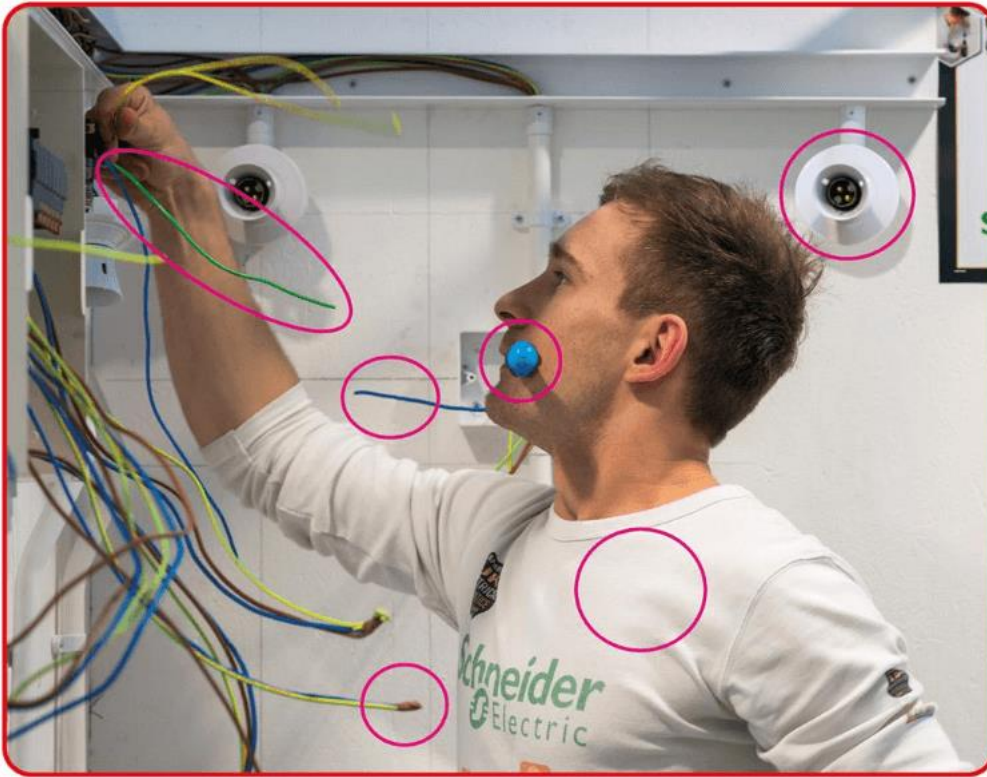
Page 32 - False alarms quiz

1. False. All newly installed manual call points should be fitted with a protective cover.
2. True. The update to BS 5839-1:2017 decided that moving a protective cover has not yet broken the frangible element and so the call point remains Type A and is therefore not deemed a variation.
3. False. Protective covers can be fitted with an integral sounder to guard against malicious activation, drawing immediate attention to the area when the cover is lifted.
4. False. There is no requirement to fit protective covers to existing installations.
5. True. The recommendation is not retrospective but it would still be wise to fit a protective cover to a call point that has a history of accidental or malicious activations.

Page 34 & 35 - CEDIA Smart home quiz

1. b
2. b
3. a
4. c
5. b
6. b
7. c
8. b
9. d
10. d
11. c
12. a
13. d
14. b
15. d
16. b
17. d

Page 40 - Spot the difference



Page 45 - Fire safety

1. True: Chapter 13 131.1 (ii) Excessive temperatures likely to cause burns, fires and other injurious effects.
2. False: Persons, **livestock** and property must be protected: Chapter 42, 421.1.1
3. False: the generally accepted lower limit is 25 litres, therefore 25 litres and above is a significant quantity. Chapter 42; 421.1.5; Note 2
4. True: See Appendix 5, Classification of external influences
5. False: Mineral insulated cable to BS EN60702 can be installed BUT also other types of cable with fire resisting characteristics may be specified. Chapter 42, 422.6
6. True: Chapter 52: 527.1, Precautions within a fire-segregated compartment
7. True: Chapter 43, 433.3.3

8. False: A 50mm x 50mm trunking has a cross-sectional area exceeding 710mm² and will therefore need to be sealed at relevant locations. Chapter 52, 527.2 Sealing of Wiring Systems: 527.2.1
9. False: Chapter 53: 537.4.2.2 (ii) and (iii). The switch must be located in the main entrance of the building, or otherwise agreed with the local fire authority, and be no higher than 2.75m from the ground.
10. True: Section 711: 711.521 Types of wiring system.

Page 46 - Smart home technology

1. True
2. True
3. False
4. True
5. False
6. True
7. True
8. False
9. False
10. True

Page 48 - Home automation

1. b
2. d
3. a
4. d
5. c
6. d
7. a
8. c

Page 50 - Wiring accessories

1. c
2. b

SPARKS

- 3. d
- 4. b
- 5. b
- 6. d

Page 52 - General electrical knowledge

- 1. d
- 2. b
- 3. b
- 4. c
- 5. a
- 6. a
- 7. c
- 8. d

Page 53 - Matching units and quantities

- 1. C
- 2. E
- 3. F
- 4. H
- 5. G
- 6. B
- 7. A
- 8. D
- 9. J
- 10. I

Page 54 - Electro-technical questions

- 1. d
- 2. a
- 3. c
- 4. c
- 5. d
- 6. b
- 7. c

Page 55 - Wordsearch

